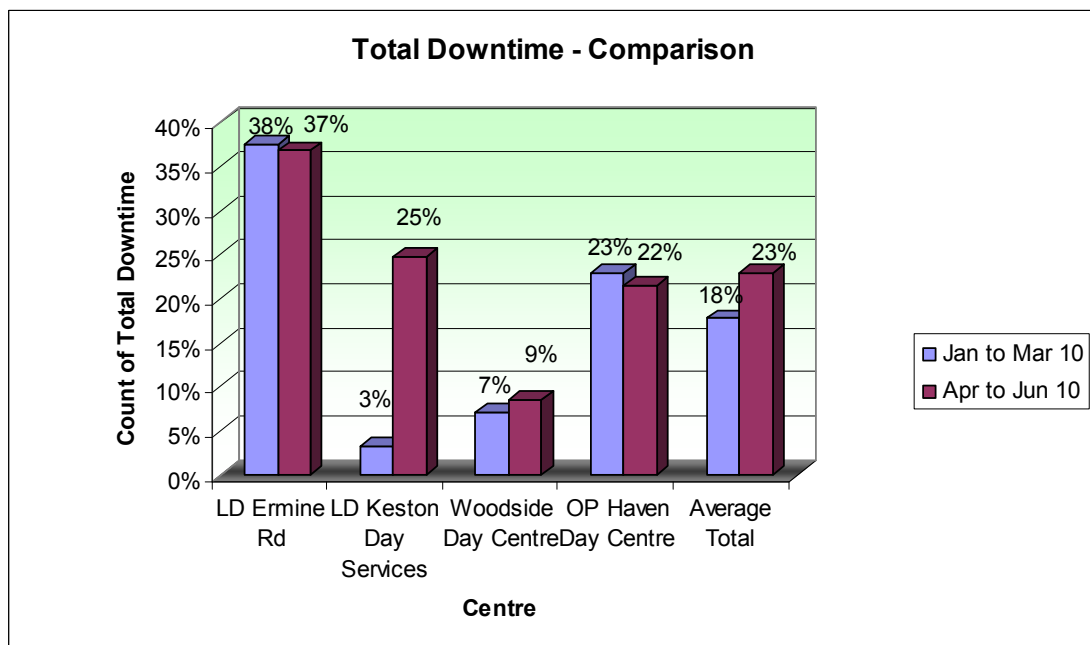
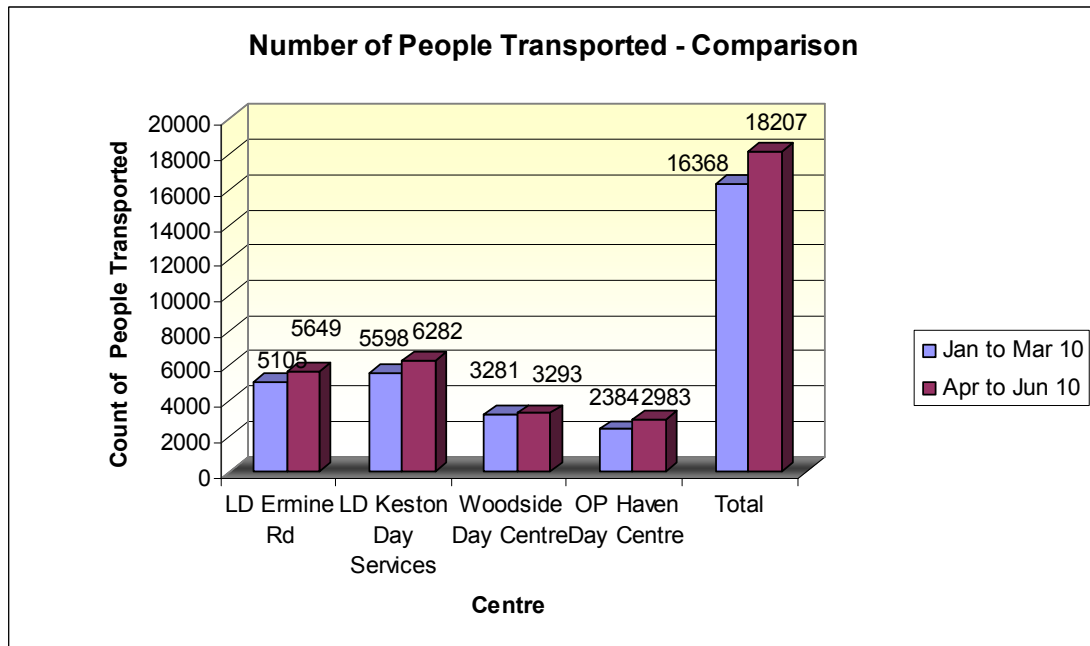


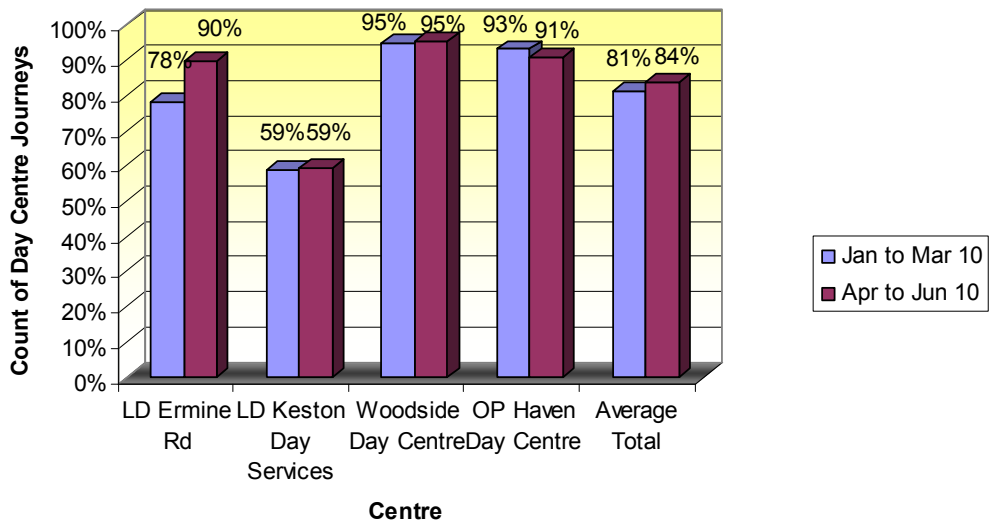
## Appendix 2

Monitoring Data for first two quarters of the year which supports management analysis in relation to relative performance between services.

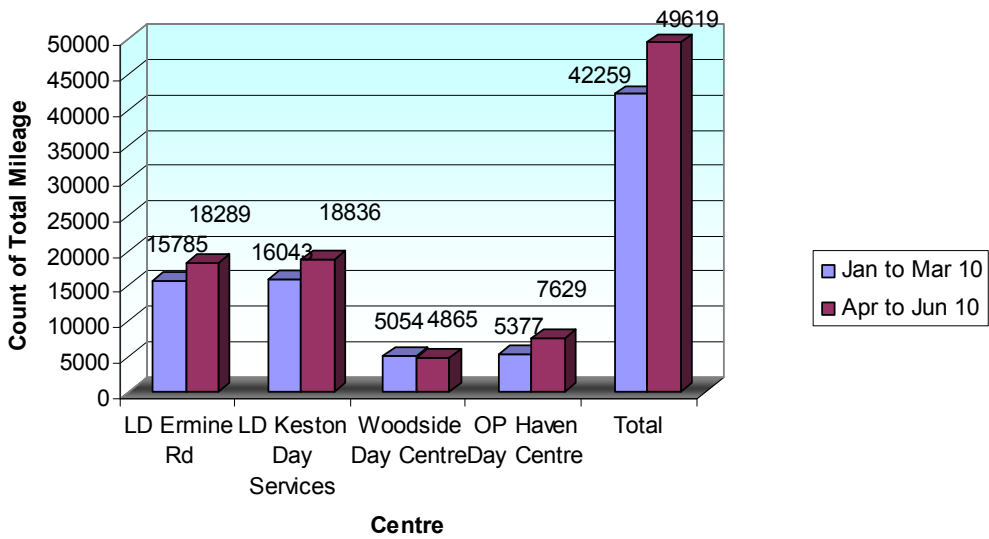
As recommended by Overview and Scrutiny committee this information will also aid in external benchmarking once we are aware of other boroughs that have devolved passenger transport systems.

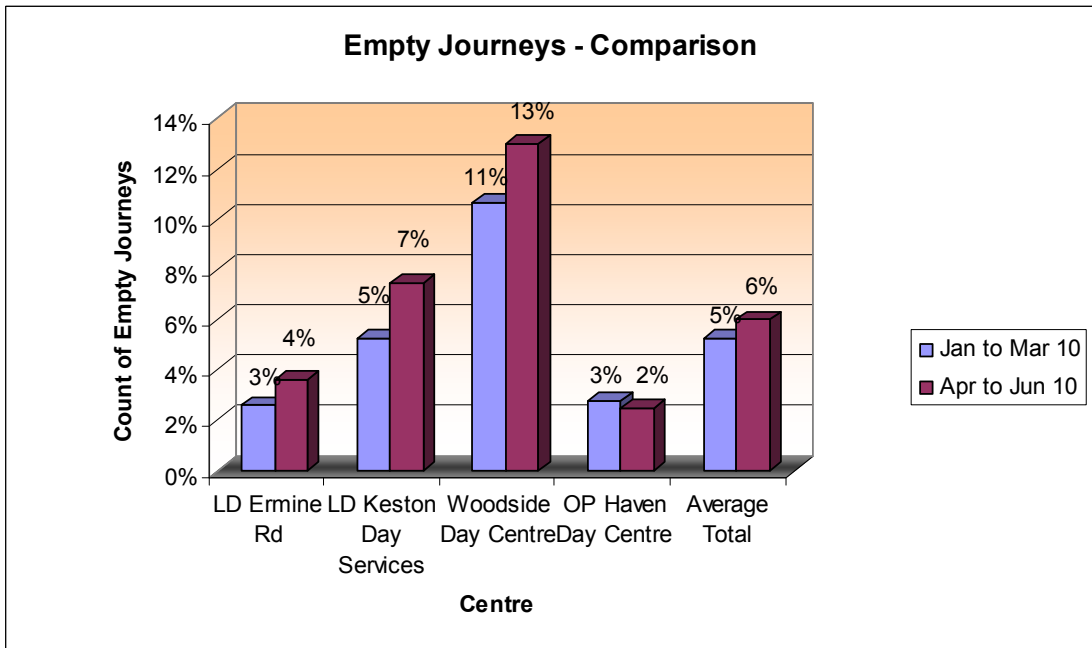
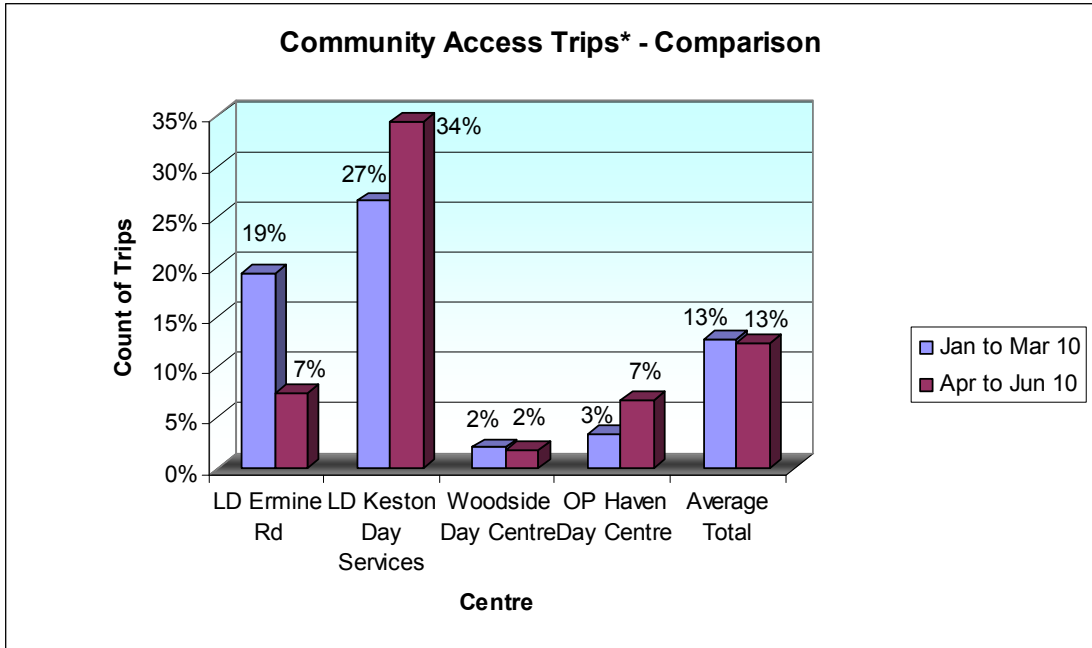


### Day Centre Journeys - Comparison



### Total Mileage - Comparison





Overall the data indicates a significant level of consistency in performance across all day service locations.